



Kee-line Case Studies

Presented by Jason Godfrey
UK Sales Manager

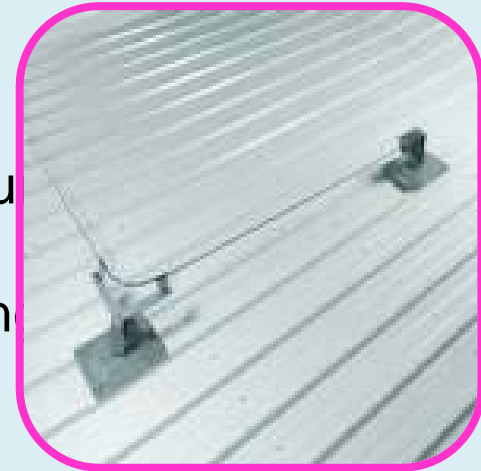


SAFETY AT THE HIGHEST LEVEL



Presentation contents

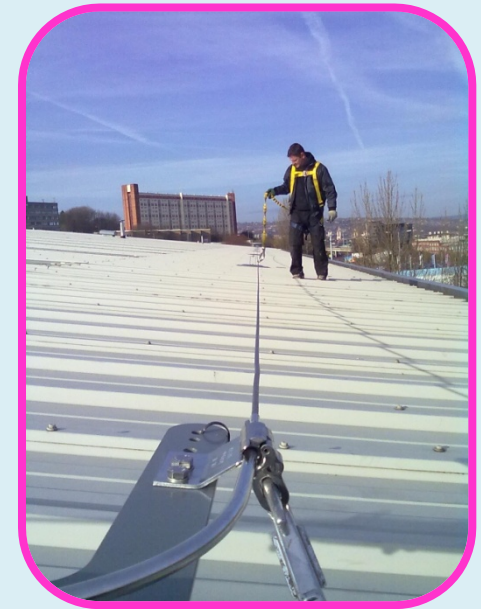
- Kee-line for profile roofs – Clothing Retailer
- Kee-line for membrane roofs – Diesel Engines manufacture
- Kee-line for standing seam roofs – Empress State Building
- Kee-line for post-anka – 02 Slough
- Kee-line for structures – RWE Power station





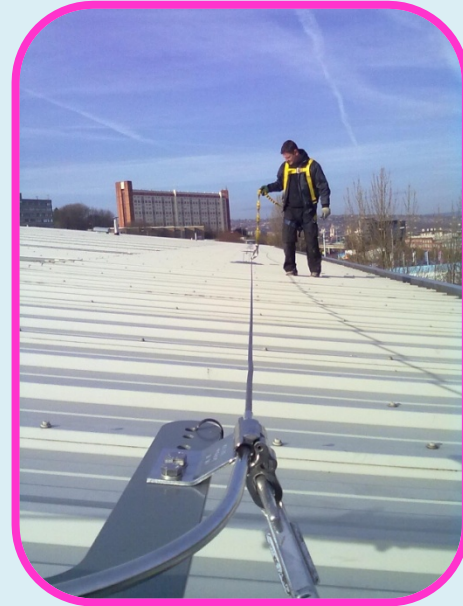
Clothing Retailer.

- ❑ Safe access required for annual roof maintenance to 225 out of town retail outlets.
- ❑ Kee-line required for installation to metal profile roofs.
- ❑ Pilot project started January 2011.
- ❑ Pilot project completed March 2011
- ❑ 3 Stores completed to date worth £12K
- ❑ Total project value £700K +.
- ❑ Project roll out to start April 2011 and could last 2+ years.
- ❑ Kee-safety installer partner – Stephens Installations Ltd..
- ❑ Additional Kee-Safety products used, harnesses, lanyards, rope grabs & personal PPE.





Clothing Retailer.





Diesel Engines manufacturer

- ❑ Diesel Engines manufacturer, England, UK.
- ❑ Safe system of work required for maintaining & inspecting roofs .
- ❑ 2 Kee-line to membrane roofs restraint systems installed to date totalling over 1000 meters.
- ❑ Kee-Line weathering detail approved by roof manufacturer.
- ❑ 1st of 12 factory premises completed Dec 2010
- ❑ Project value to date £20K.
- ❑ 2nd factory roof due to start March 2011.
- ❑ Kee-Safety installer partner – Hi-Dri.
- ❑ Additional Kee-Safety products used – Harnesses, Lanyards & Personal PPE.





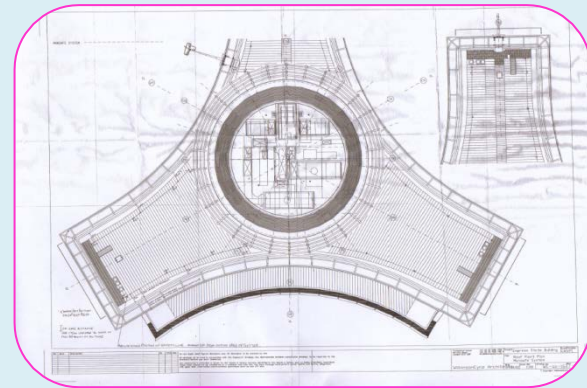
Diesel Engine Manufacturer





Empress State Building

- ❑ Empress State Building, London, UK
- ❑ Safe system of work required for maintaining & inspecting roofs .
- ❑ 6 restraint Kee-line to Kal-zip standing seam roof installed.
- ❑ Project completed July 2010
- ❑ Project value £5K.
- ❑ Kee-Safety installer partner – Rope Task.
- ❑ Additional Kee-Safety products used – Harnesses, Lanyards & Personal PPE.





Empress State Building



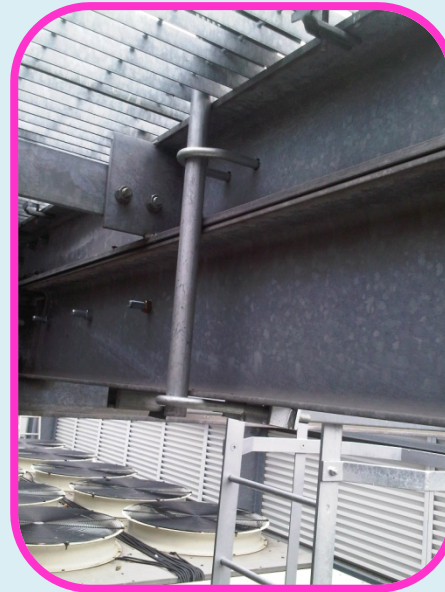
02 Building Slough UK

- ❑ 02 Building, Slough UK
- ❑ Restraint system required to eliminate fall risk through glass when cleaning roof lights.
- ❑ Project completed April 2011.
- ❑ Project Value £50K.
- ❑ Kee-line to Post-anka Value £2K.
- ❑ End user – 02 Telecoms
- ❑ Kee-safety installer partner – PWC UK Ltd
- ❑ Additional Kee-Safety products used,
 - Kee-walk freestanding walkway.
 - Kee-guard freestanding guard rail.
 - Ring-anka fall arrest eyebolts.
 - Personal PPE.
 - Harnesses & lanyards.



**Kee®
Walk**

02 Building Slough UK



**Kee®
Safety**



Power Station

- ❑ N Power ,Power station, Wales.
- ❑ Safe system of work required for maintaining & inspecting cranes.
- ❑ 8 Kee-line to structures restraint systems installed to date totalling 1202 meters.
- ❑ 1st of 3 phases completed Jan 11,
- ❑ Project value to date £16K.
- ❑ 2nd project phase due to start Feb 2011.
- ❑ Kee-Safety installer partner – Crane-aid.
- ❑ Additional Kee-Safety Products Used – Box-bolts, Harnesses, Lanyards & Personal PPE.





Power Station





Thank You!

Any Questions?